

**Narrow
Self-Propelled
Articulating
Boom**

**Z™ 30/20N RJ
Z™ 30/20N RJ**



○ Zero tailswing!
It works in tight
places.



Genie Industries

Compelling Reasons to Buy the Z-30/20N Boom

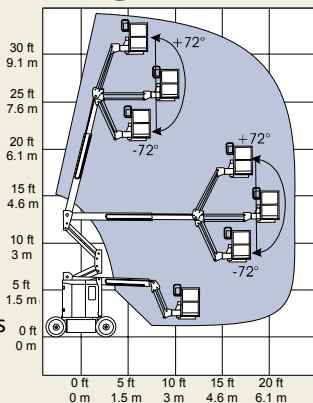
- Zero tailswing and zero front arm swing in stowed and raised working positions, along with its 1.2 m (47 in) wide chassis, make this boom the only one with **true narrow aisle access**.
- The 1.22 m (4 ft) jib boom has 144° range of motion, so it can be positioned **above or below horizontal**.
- Z-30/20N RJ has optional rotating jib that adds an industry-leading 200° of horizontal rotation.
- 180° powered platform rotation allows **precise platform positioning and easy operation**.
- The all-new Sep-Ex drive motors and controller provide automatic **hill braking and ramp braking**.

- The Sep-Ex drive system allows maximum drive performance resulting in **35% gradeability and 5.3 km/h travel speed**.
- The Sep-Ex motor controller **eliminates the need for forward/reverse contractors or speed sensors**. This reduces complexity and improves the reliability of the drive system.

Standard Features

- Compact 1.2 m (47 in) overall width
- 227 kg (500 lb) lift capacity
- Fully proportional controls
- 180° platform rotation
- Self-levelling platform
- Jib features 144° working range
- 48V DC power source
- Drive enable system
- Solid rubber, non-marking tyres
- Hour meter

Range of Motion



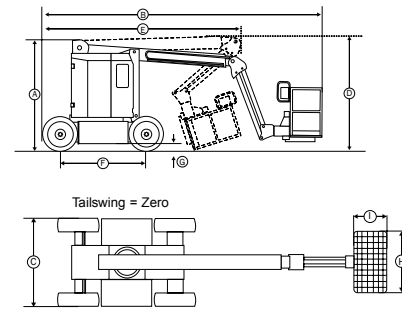
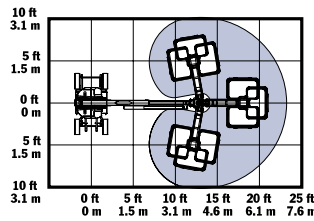
Options and Accessories

- Rotating jib, providing 200° of horizontal rotation
- Battery charge indicator
- Alarm package

Standards Compliance

- ANSI/SIA A92.5
- CSA CAN3-B354.4-M82
- CE compliance option
- AS 1418.10

Range of Motion for Rotating Jib



Specifications

	Z-30/20N		Z-30/20N RJ	
	Metric	US	Metric	US
Working height max	11 m	36 ft	10.6 m	34 ft 10 in
Platform height max	9.1 m	30 ft	8.8 m	28 ft 10 in
(A) Height - stowed	2 m	6 ft 7 in	2 m	6 ft 7 in
(B) Length - stowed	5.1 m	16 ft 9 in	5.3 m	17 ft 5 in
(C) Width	1.2 m	3 ft 11 in	1.2 m	3 ft 11 in
(D) Storage height	2.08 m	6 ft 10 in	2.24 m	7 ft 4 in
(E) Storage length	3.5 m	11 ft 6 in	3.76 m	12 ft
(F) Wheelbase	1.57 m	5 ft 2 in	1.57 m	5 ft 2 in
(G) Ground clearance	9 cm	3½ in	9 cm	3½ in
(H) Platform width	1.17 m	46 in	1.17 m	46 in
(I) Platform length	76 cm	30 in	76 cm	30 in
Horizontal reach max	6.4 m	21 ft	6.3 m	20 ft 8 in
Up and over clearance	3.8 m	12 ft 6 in	3.8 m	12 ft 6 in
Lift capacity	227 kg	500 lb	227 kg	500 lb
Turning radius (outside)	3 m	9 ft 10 in	3 m	9 ft 10 in
Turning radius (inside)	1.65 m	5 ft 5 in	1.65 m	5 ft 5 in
Turntable rotation	359°		359°	
Tailswing	zero		zero	
Power source	48V (8 6V 350 AH batteries)			
Drive speed - stowed	0-5.3 km/h	0-3.3 mph	0-5.3 km/h	0-3.3 mph
Drive speed - raised *	0-1 km/h	0-0.6 mph	0-1 km/h	0-0.6 mph
Controls	proportional		proportional	
Platform rotation	180°		180°	
Tyres (solid rubber, non-marking)	56 x 18 x 46 cm	22 x 7 x 18 in	(both models)	
Auxiliary power unit	standard (electric)		standard (elec- tric)	
Gradeability	35%		35%	
Hydraulic tank capacity	15 litre	4 gal	15 litre	4 gal
Weight	6,577 kg	14,500 lb	6,622 kg	14,600 lb

* In lift mode (platform raised), the machine is designed to operate on firm, level surfaces only.



A division of FORCE CORP
FREECALL: 1800 674 777