

# T120/T126J

## TELESCOPIC BOOM LIFTS



- Reliable and robust diesel telescopic boom lifts
- Available with and without a jib boom
- Powerful 4 wheel drive
- Simple to operate and maintain
- Ideal for construction applications

 **snorkel**  
[www.snorkellifts.com](http://www.snorkellifts.com)

# TELESCOPIC BOOM LIFTS

# T120/T126J

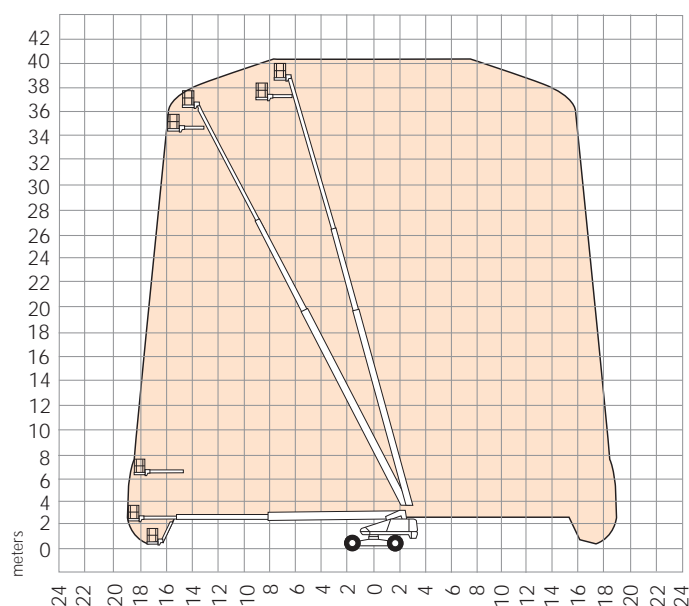
DIMENSIONS	T120	T126J
Max. working height	38.6m	40.4m
Max. platform height	36.6m	38.4m
Max. working outreach	18.9m	19.2m
Platform size	0.76m x 2.44m	0.76m x 2.44m
Overall width (A)	2.6m	2.6m
Operational width	3.9m	3.9m
Overall length (B)	12.9m	13.7m
Stowed height (C)	3.0m	3.2m
Ground clearance	330mm	330mm

PERFORMANCE		
Platform capacity (SWL)	227kg	272kg
Max. drive height	36.6m	38.4m
Max. drive speed (stowed)	4.8km/h	4.8km/h
Max. drive speed (elevated)	0.24km/h	0.8km/h
Jib length	n/a	1.8m
Jib working arc	n/a	75°
Platform rotation	180°	180°
Turret rotation (continuous)	360°	360°
Raise/lower time	280/280 seconds	208/215 seconds
Gradeability	25%	30%
Inside turning radius	5.8m	5.8m
Tyres	18 x 22.5 loader lug poly filled	
Controls	proportional joystick	
Drive system	4 wheel drive	

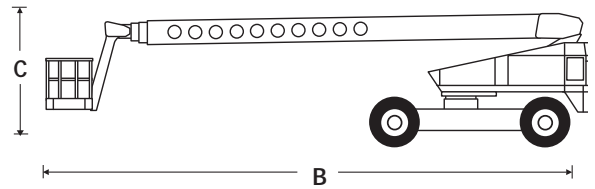
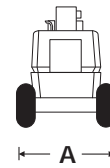
POWER	
Power source	Cummins 3.3 litre water cooled diesel 65hp

WEIGHT		
Gross weight	17,917kg	19,119kg

## WORKING ENVELOPE



Specifications subject to change without notice. Photos and diagrams in this brochure are for promotional purposes only. Refer to appropriate Snorkel operators manual for detailed instructions on the proper use and maintenance.



## STANDARD FEATURES

- 1.8m, 75° jib (T126J)
- Hydraulic powered platform rotation
- 4 wheel drive
- Proportional control of drive, boom lift and slew
- Poly filled lug tyres
- Driveable at full height
- Horn
- Power line to platform (no sockets)
- Hydraulic extending rear axle
- Envelope management system
- CE approved

## OPTIONS

- Hydraulic generator
- Airline to platform
- Flashing amber beacon
- Drive motion alarm
- Swing gate in lieu of drop bar
- Cold weather start package
- Extreme cold weather package
- Extreme environment package
- Light package
- Glazier package
- Tow package
- 12k generator package
- 12k generator/welder package

**snorkel** [www.snorkellifts.com](http://www.snorkellifts.com)

2/26 Redfern Street,  
Wetherill Park,  
NSW 2164, Australia  
t: +61 1300 900 700  
e: sales.au@snorkellifts.com