

# TB60RT/TB66JRT

## TELESCOPIC BOOM LIFT



- Powerful diesel telescopic boom lifts
- Available with and without a jib boom
- High torque, 4 wheel drive
- Simple to operate and maintain
- Ideal for construction applications

 **snorkel**  
[www.snorkellifts.com](http://www.snorkellifts.com)

# TELESCOPIC BOOM LIFT

# TB60RT/TB66JRT

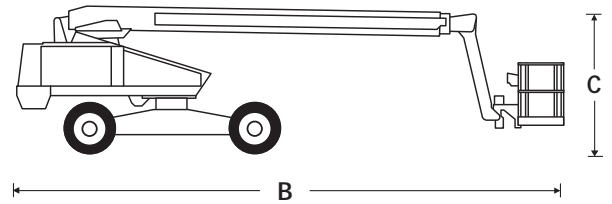
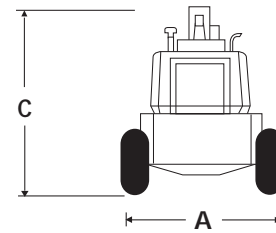
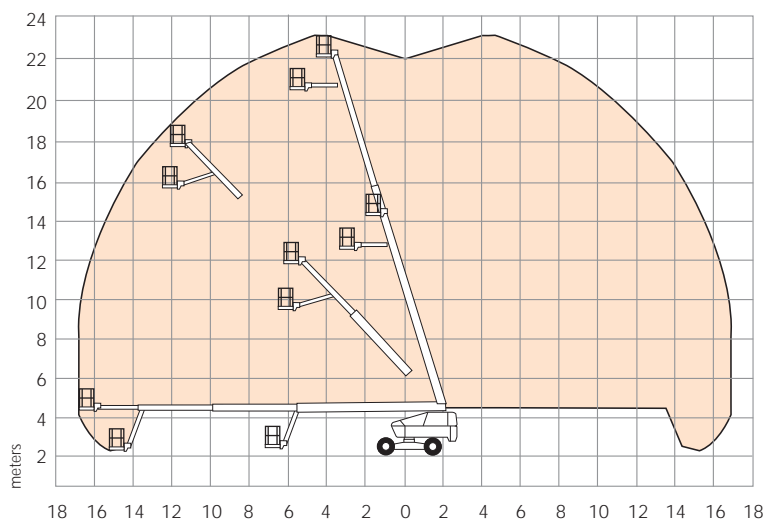
| DIMENSIONS            | TB60RT       | TB66JRT      |
|-----------------------|--------------|--------------|
| Max. working height   | 20.3m        | 22.1m        |
| Max. platform height  | 18.3m        | 20.1m        |
| Max. working outreach | 15.2m        | 17.1m        |
| Platform size         | 2.44 x 0.76m | 2.44 x 0.76m |
| Overall width (A)     | 2.5m         | 2.5m         |
| Overall length (B)    | 9.4m         | 10.0m        |
| Stowed height (C)     | 2.7m         | 2.7m         |
| Wheelbase             | 3.0m         | 3.0m         |
| Ground clearance      | 330mm        | 330mm        |

| PERFORMANCE                 | TB60RT                                     | TB66JRT     |
|-----------------------------|--|-------------|
| Platform capacity           | 227kg                                      | 227kg       |
| Max. drive height           | 18.3m                                      | 20.1m       |
| Max. drive speed (stowed)   | 4.8km/h                                    | 4.8km/h     |
| Max. drive speed (elevated) | 0.8km/h                                    | 0.96km/h    |
| Jib length                  | n/a  | 1.8m        |
| Jib arc                     | n/a  | 90°         |
| Raise/lower time            | 150/150 sec                                | 176/176 sec |
| Gradeability                | 30%  | 30%         |
| Inside turning radius       | 4.7m                                       | 4.7m        |
| Tyres                       | 38cm x 50cm foam filled                    |             |
| Controls                    | proportional drive, raise, slew + rotation |             |
| Drive system                | 4 wheel drive                              |             |

| POWER                | TB60RT                            | TB66JRT |
|----------------------|-----------------------------------|---------|
| Power source         | Deutz F4L-2011F air cooled diesel |         |
| Auxillary power unit | 12V DC                            | 12V DC  |

| WEIGHT       | TB60RT  | TB66JRT  |
|--------------|---------|----------|
| Gross weight | 9,857kg | 11,916kg |

## WORKING ENVELOPE



## STANDARD FEATURES

- 1.8m, 90° jib (TB66JRT)
- 180° hydraulic powered platform rotation
- 4 wheel drive
- Proportional control of drive, boom lift, rotation and slew
- Foam filled lug tyres
- Driveable at full height
- Operator horn
- 3 entry cage
- Power line to platform (no sockets)
- CE approved

## OPTIONS

- Special paint colours
- Hydraulic generator
- Bumpguard system
- Platform control box cover
- Twin platform work lights
- Airline to platform
- Amber beacon on boom
- Swing gate in lieu of drop bar (at main entrance)
- Sand blast protection kit
- Driving lights

**snorkel** [www.snorkellifts.com](http://www.snorkellifts.com)

2/26 Redfern Street,  
Wetherill Park,  
NSW 2164, Australia  
t: +61 1300 900 700  
e: sales.au@snorkellifts.com