



Self-Propelled Telescopic Booms

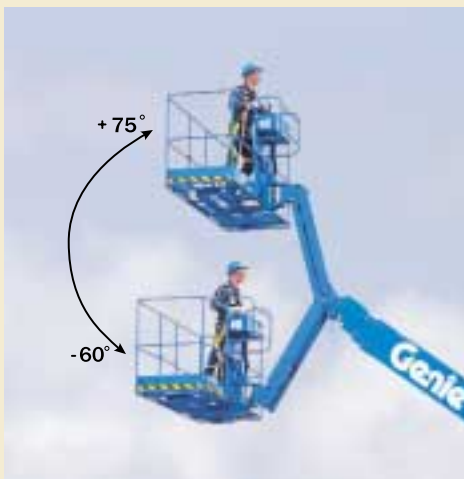
S-40 / S-45™

More of what
you need to
get the tough
jobs done.



We give you features you won't find on other stick booms.

Genie's S-40 and S-45 feature faster lift speeds, more powerful engine options, and low-profile chassis covers offering the industry more of what it needs to get the job done. Choose the Genie S-40 boom, with 14 m (46 ft) of working height, or the S-45, with an additional 1.52 m (5 ft) articulating jib boom. Customise your boom with many option packages.



S-45 Out-and-Up Articulating Jib Boom

This special option gives you an additional 1.52 m (5 ft) of horizontal reach for a total of 11.2 m (36 ft 8 in). The S-45 jib boom gives you flexibility too – 135° of working range. You not only access 75° above horizontal, but you can get to 60° below horizontal.



Standard Features

Proportional Controls

Allow smooth operation and easy positioning.

160° Hydraulic Platform Rotator

Gives you precise placement without repositioning the boom.

Easily Accessible Components

The swing-out engine tray and easy-to-understand electrical system simplify routine maintenance.

Positive Traction Drive

Full-time positive traction system on both 4x2 and 4x4 models.

Drive Enable System

Informs operator when the drive and steer functions will move opposite the controller movements.

Low-Profile Chassis Covers

Provide high visibility for the operator while unit is in stowed position.

Platform Controls

Large, simple to use controls for easy operation.

Transportability

The S-40 and S-45 are designed to load and unload easily from transport vehicles.

Increased Lift Speed

The capability to operate multiple functions simultaneously results in maximum lift speed. The S-40 elevates from the ground to full height in just 40 seconds.

Powerful Engine

The Ford LRG 425 Electronic Fuel Injection Gas/LPG 61 kw (82 hp) engine is more powerful with enhanced performance in high altitude and cold weather environments. The fuel-injection system requires less service than carburetor systems.

Easily customised to meet your needs:

Engine Options

- Ford LRG 425 EFI
- Gas/LPG 61 kw (82 hp)
- Deutz Diesel 42 kw (56 hp)
- Deutz Diesel 27 kw (36 hp)
- Perkins Diesel 45 kw (60 hp)

Platform Options

- Standard: Steel 1.83 m (6 ft)
- Optional: Steel 2.44 m (8 ft)

Drive Options

- 4x2 – two wheel drive
gradeability up to 30%
- 4x4 – four wheel drive
gradeability up to 40%

Axle Options

- Oscillating axle
- Non-oscillating axle

Tyre Options

- Rough terrain, air or foam filled.
- Rough terrain non-marking (4x4 only)
- High floatation turf tyre (4x4 only)

Terrain Tracking Active Oscillation System

This revolutionary system automatically senses the terrain and adjusts the axle position based on ground conditions. The oscillating axle allows you to drive on uneven ground with the turntable rotated up to 90°. It provides an amazingly smooth ride even when the platform is raised.



Loeering Tracking Systems

Loeering offers two specially designed tracking systems for the S-40 and S-45. The tracks, available in both rugged steel and soft-bottom urethane, along with a wheel and idler system, give the lifts more traction and floatation in adverse conditions. The tracks attach quickly and easily with a customized intallation tool. After initial intallation, the drive-on design allows reinstallation in less than 30 minutes. The tracks are fully adjustable and rebuildable, making them the ultimate value.

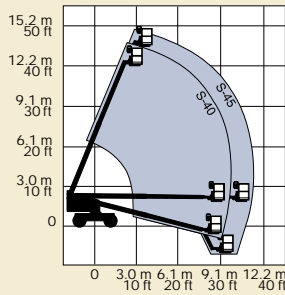


Standard Features

- S-40 has 14 m (46 ft) working height
- S-45 has 15.5 m (51 ft) working height
- S-40 has 9.7 m (31 ft 8 in) horizontal reach
- S-45 has 11.2 m (36 ft 8 in) horizontal reach
- 227 kg (500 lb) lift capacity
- Oscillating axle system on 4x4 models
- Dual fuel (Gas/LPG) or diesel engine options
- Fully proportional platform controls with ramp up/down feature
- Hydraulic platform rotation
- 360° continuous turntable rotation
- 12V DC auxiliary power
- Fuel select switch on platform and ground control panels (Gas/LPG models)
- Closed-loop hydrostatic drive

- Hydraulic oil cooler
- Positive traction drive
- Drive enable system
- Self-levelling platform
- Locking turntable covers
- Anti-restart engine protection
- Auto engine fault shutdown
- AC wiring to platform
- Wire braided hose
- Tilt alarm
- Horn
- Hour meter

Range of Motion

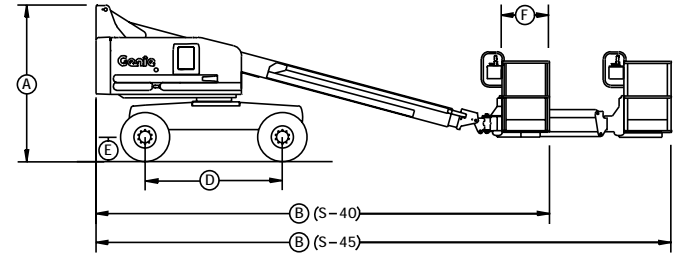
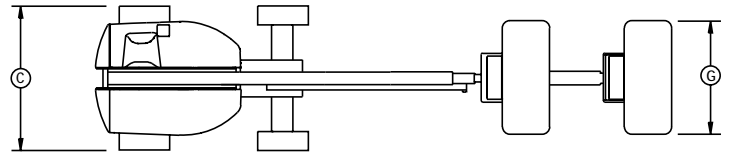


Options and Accessories

- Alarm package
- Cold start packages
- 2500 or 3000 watt AC generator
- 2.44 m (8 ft) steel platform
- Platform swing gate
- Air line to platform
- Platform rail pinch guard
- Platform work lights
- Lockable platform control box cover
- Tool tray
- Fluorescent tube caddy
- Hostile environment packages
- Additional LPG tank
- GS/LPS rating for Ford engine powered machines
- Foam-filled tyres
- Tow package
- Driving lights
- Weld lead to platform
- Spark arrester (Ford and Deutz)
- Scrubber/spark arrester (Deutz)

Standards Compliance

- ANSI/SIA A92.5
- CAN3-B354.4-M82
- CE
- AS 1418.10



Specifications

Model	S-40		S-45	
	Metric	US	Metric	US
Working height max*	14 m	46 ft	15.5 m	51 ft
Platform height max	12.2 m	40 ft	13.7 m	45 ft
(A) Height - stowed	2.5 m	8 ft 2 in	2.5 m	8 ft 2 in
(B) Length - stowed	7.4 m	24 ft 3 in	8.5 m	27 ft 10 in
(C) Width	2.3 m	7 ft 6 in	2.3 m	7 ft 6 in
(D) Wheelbase	2.2 m	7 ft 3 in	2.2 m	7 ft 3 in
(E) Ground clearance	32 cm	12½ in	32 cm	12½ in
(F) Platform length:	183 cm	76 cm	30 in	76 cm
	2.44 m	91 cm	36 in	91 cm
(G) Platform width:	183 cm	1.83 m	72 in	1.83 m
	2.44 m	2.44 m	96 in	2.44 m
Horizontal reach max	9.7 m	31 ft 8 in	11.2 m	36 ft 8 in
Lift capacity	227 kg	500 lb	227 kg	500 lb
Turning radius - outside	4.78 m	15 ft 8 in	4.78 m	15 ft 8 in
Turning radius - inside	2 m	6 ft 8 in	2 m	6 ft 8 in
Turntable rotation	360° continuous		360° continuous	
Turntable tailswing	86 cm	34 in	86 cm	34 in
Power source	Ford LRG 425 EFI Gas/LPG 861 kw (2hp) Deutz Diesel 42 kw (56 hp) Deutz Diesel 27 kw (36 hp) Perkins Diesel 45 kw (60 hp)			
Platform rotation	160°		160°	
Auxiliary power unit	12V DC		12V DC	
Tyres - RT Lug	12 - 16.5 NHS		12 - 16.5 NHS	
Tyres - Ribbed (4x2 front)	12.5 L - 16 SL		12.5 L - 16 SL	
Hydraulic tank capacity	170 litres	45 gal	170 litres	45 gal
Fuel tank capacity	125 litres	33 gal	125 litres	33 gal
Weight**	5,582 kg	12,306 lb	6,709 kg	14,790 lb
S-40/S-45	4x2		4x4	
Drive speed, stowed Gas/LPG models	6.4 kph	4 mph	5.6 kph	3.5 mph
Drive speed, stowed Deutz Diesel models	6.1 kph	3.8 mph	4.5 kph	2.8 mph
Drive speed, raised or extended	1.1 kph	0.68 mph	1.1 kph	0.68 mph
Gradeability - stowed	30%		40%	

* The working height adds 2 m to platform height. Imperial adds 6 ft to platform height
** Weight will vary depending on options and/or country standards.



A division of FORCE CORP
FREECALL: 1800 674 777