

Straight Jib Boom



TB47J

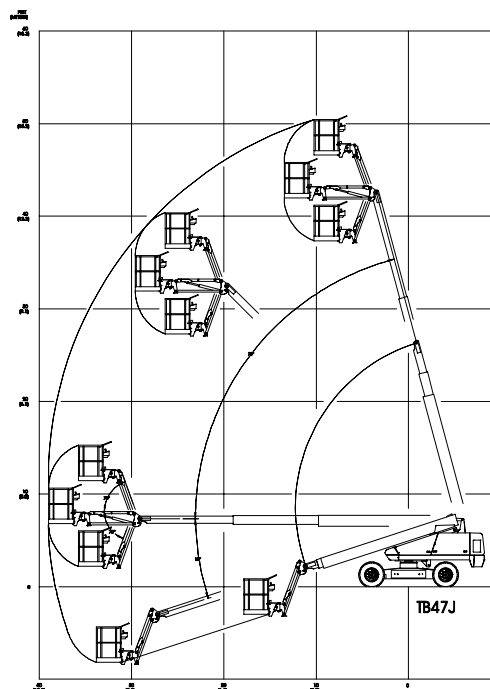
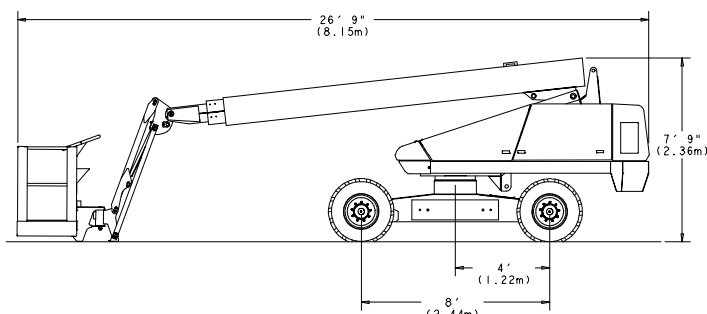


Snorkel

www.snorkelusa.com

Snorkel TB47J

| Platform | Machine Dimensions | Performance |
|-------------------------------------|---|--|
| Height.....46'6" (14.2 m) | Stowed Length.....26'9" (8.15 m) | Power Source.....Gas or Diesel |
| Size.....30" x 60" (76 cm x 152 cm) | Stowed Height7'1 1/2" (2.4 m) | Fuel Capacity.....20 gal (75.7 L) |
| Capacity.....500 lbs (227 kg) | Wheelbase8' (2.44 m) | Hydraulic Capacity.....25 gal (94.6 L) |
| Construction.....Steel | Width.....7'11 1/2" (2.4 m) | Drive Speed |
| | Ground Clearance10" (25 cm) | Elevated.....1 mph (1.6 km/h) |
| | Weight.....13,315 lbs (6,040 kg) | Stowed.....3 mph (4.8 km/h) |
| | Tire Size.....12" x 16 1/2" (30 cm x 42 cm) | Gradeability (Theoretical).....41% |
| | | Horizontal Reach.....39' (11.9 m) |



Standard Features

- 360 degree continuous turntable rotation
- Proportional drive, lift & swing
- Engine anti-restart
- Tie down lugs
- 170 degree hydraulic Platform rotation
- 12 volt emergency operated power
- Manual bleed down valve
- Hydraulic oil level/temp gauges
- Driveable at full height
- Tilt alarm
- 125 volt GFCI AC outlet
- Aluminum upper booms
- Hour meter
- High engine temp/low oil pressure shut down
- Lifting lugs
- Four wheel drive

Options

- Operator Horn
- Platform control box cover
- Flashing light on boom
- Swinging gate
- Sandblast protection kit
- Driving lights
- Dual Fuel
- Platform work lights
- Spark arrestor muffler
- Cold weather start kit
- AC Generator
- Drive motion alarm
- Foam filled tires
- Tow kit
- Two wheel drive opt. deduct
- Platform – 92" x 30" (234 x 76 cm) Alum. 500 lb Capacity (227 kg)
- Platform – 60" x 30" (152 x 76 cm) Alum. 600 lb Capacity (272 kg)

DANGER: Models described in this brochure are NON-INSULATED and do not provide electrocution protection from contact with or close proximity to energized conductors which are pointed out on decals and placards attached to the machine. Only qualified and trained operators are to be authorized to use and operate a work platform. Aerial work platforms must be elevated only on firm, level surface. Products in this brochure comply with applicable ANSI Standards. This literature is for illustrative purposes only. Consult Operating Maintenance and Parts Manuals for proper procedures. Specifications may vary and are subject to change without notice or obligation.



A division of FORCE CORP
FREECALL: 1800 674 777