



**Rough Terrain
Telescopic Boom
Material Handler**

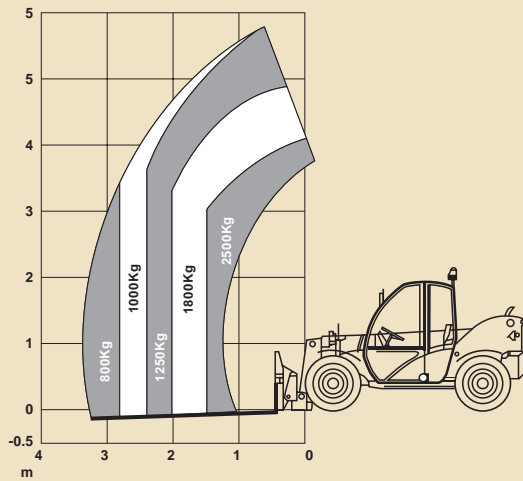
GTH™-2506

A compact and highly manoeuvrable machine designed for a wide range of applications



Genie Australia
GENIE MEANS MORE THAN LIFTING

Lift Capacity Chart



Standard Features

- 2500 kg (5511 lbs) max lift capacity
- 5.75m (18 ft 10 in) max lifting height
- 3.44m (11 ft 3 in) max forward reach
- 360° visibility over the lowered boom
- Four wheel drive
- Three steering modes: front wheel steer, crab steer and coordinated steer
- Power assisted steering
- Limited slip differential
- Closed loop hydrostatic drive for smooth and precise positioning
- Variable displacement pump and motor
- Multi function – proportional joystick
- Brakes: multi disc, oil immersed, self adjusting
- Quick coupling of tools from cab
- Side mounted engine for easy access to components
- Floating forks
- Lockable fuel tank
- Comfortable cab with tinted glass, windscreen wiper, heater
- Full road lights
- Adjustable steering wheel
- Fully adjustable seat
- Windshield protection grid

Options and Accessories

- Air conditioning
- Forks side shift class 3 +/- 100mm (2300 kg max)
- Loading shovels 500 litres
- Loose materials shovel 800 litres
- Fixed hook on plate (max 2300 kg)
- 4 in 1 bucket 400 litres
- Adjustable spotlights
- Rotating fork (max 1600 kg)
- Spare wheel
- Jib 2m/400 kg
- Fork extension (1800 mm)

Safety System

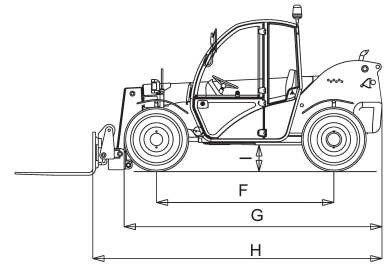
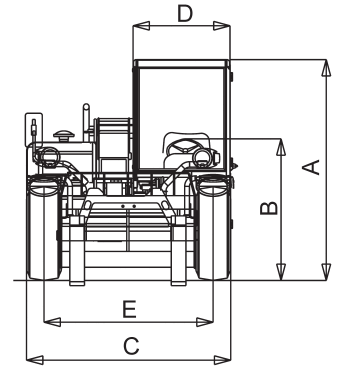
Longitudinal stability control system with:

- Visual display with coloured LEDs
- Audible alarm
- Automatic lockout of boom extension and lowering.

Standard Compliance

- Operating cab, conforms to ISO 3471 (ROPS) and ISO 3449 (FOPS)
- Low emission diesel engine according to UE 97/68 directives

(A)	Height: 1.92 m (6 ft 4 in)
(B)	Height at steering wheel: 1.23 m (4 ft 5 in)
(C)	Width: 1.80 m (5 ft 9 in)
(D)	Inside cab width: 0.86 m (2 ft 10 in)
(E)	Track: 1.50 m (4 ft 11 in)
(F)	Wheelbase: 2.28 m (7 ft 6 in)
(G)	Length at front wheels: 3.31 m (10 ft 10 in)
(H)	Length at fork-holder plate: 3.72 m (12 ft 2 in)
(I)	Ground clearance: 36 cm (1 ft 2 in)



Specifications

	Metric	Imperial
Lift capacity (max.)	2,500 kg	5,511 lbs
Lift capacity at max. height	1,250 kg	2,755 lbs
Lift capacity at max. reach	800 kg	1,763 lbs
Lifting height (max.)	5.75 m	18 ft 10 in
Reach at max. height	0.45 m	17 1/2 in
Maximum forward reach	3.44 m	11 ft 3 in
Lifting speed	6 sec	6 sec
Lowering speed	5 sec	5 sec
Extension Speed	6 sec	6 sec
Retraction Speed	5 sec	5 sec
Inside/outside turning radius	1680mm/3345mm	6 ft 6 in/11 ft
Towing capacity at dynamometer	4,650 kg	10,251 lbs
Obstruction angle	90°	90°
Departure angle	60°	60°
Engine Type	Deutz F4M 2011 Diesel	47 KW (63 hp)
Maximum travel speed	24 km/h	15 mph
Tank capacities		
Fuel	60 Lt	13 gal
Engine oil	8 Lt	1 3/4 gal
Hydraulic oil	70 Lt	15 gal
Fork holder plate rotation	135°	135°
Forks: Floating forks	length 1200 mm	3 ft 9 in
Section	130 x 50 mm	4 in x 1.5 in
Tyres	12 – 16.5 / PR8	
	8-hole wheel disk (DIN 70361)	
Weight	5,120 kg	11,275 lbs



A division of FORCE CORP
FREECALL: 1800 674 777