

**Rough Terrain  
Telescopic Boom  
Material Handler**

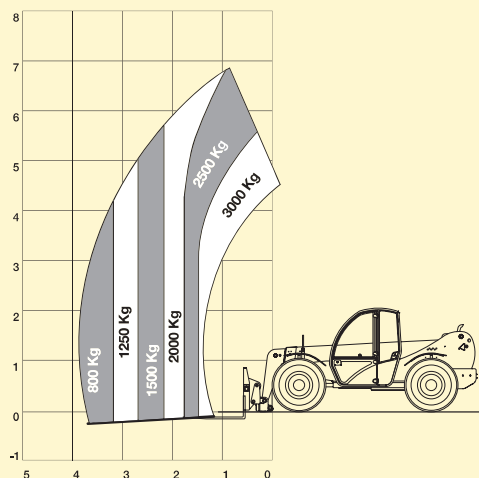
**GTH™-3007**

An exceptionally  
compact and  
manoeuvrable  
machine with  
superior lift capacity



**Genie Australia**  
GENIE MEANS MORE THAN LIFTING

## Lift Capacity Chart



### Standard Features

- 3,000 kg (6,614 lb) max lift capacity
- 6.8 m (22 ft 10 in) max lifting capacity
- 3.80 m (12 ft 5 in) max forward reach
- 360° visibility over the lowered boom
- Four-wheel drive
- Three steering modes: front wheel steer, crab steer and coordinated steer
- Powered assisted steering
- Limited slip differential
- Closed loop hydrostatic drive for smooth and precise positioning
- Two-speed mechanical gearbox
- Variable displacement pump and motor
- Multi-function – proportional joystick
- Brakes: multi-disk, oil immersed, self-adjusting
- Quick coupling of tools from cab
- Side-mounted engine for easy access to components
- Turbo-charged, direct injection engine with low emissions
- Floating forks
- Lockable fuel tank
- Comfortable cab with tinted glass, windscreen wiper, heater
- Full road lights
- Adjustable steering wheel
- Fully adjustable seat
- Windshield protection grid

### Options and Accessories

- Air conditioning
- Forks side shift class 2 +/- 100 mm (2500kg max)
- Loading shovels 500 litres
- Loose materials shovel 800 & 1200 litres
- 4 in 1 bucket 400 litres
- Spare wheel
- Jib 2m / 400 kg
- Fixed hook on plate (max 2500 kg)
- Adjustable spotlights
- Tyre and rims (405/70-24)

### Safety System

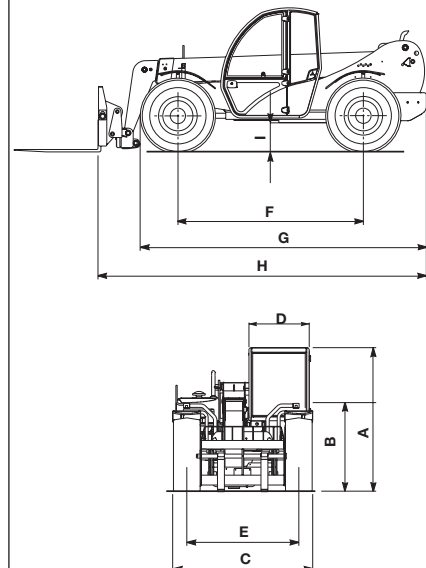
Longitudinal stability control system with:

- Visual display with coloured LEDs
- Audible alarm
- Automatic lockout of boom extension and lowering

### Standard Compliance

- Operating cab conforms to ISO 3471 (ROPS) and ISO 3449 (FOPS)
- Low emission diesel engine according to UE 97/68 directives

(A)	Height: 2.05 m ( 6 ft 7 in)
(B)	Height at steering wheel: 1.33 m (4 ft 4in)
(C)	Width: 2.00 m (6 ft 6½ in)
(D)	Inside cab width: 0.86 m (2 ft 6in)
(E)	Track: 1.60 m (5 ft 3 in)
(F)	Wheelbase: 2.65 m (8 ft 8in)
(G)	Length at front wheels: 4.09 m (13 ft 5 in)
(H)	Length at fork-holder plate: 4.69 m (15 ft 4½ in)
(I)	Ground clearance: 0.41 m (1 ft 4 in)



## Specifications

	Metric	Imperial
Lift capacity (Max)	3,000 kg	6,614 lb
Lift capacity at max. height	2,500 kg	5,511 lb
Lift capacity at max. reach	800 kg	1,763 lb
Lifting height (max.)	6.8 m	22 ft 10 in
Reach at max. height	0.70 m	2 ft 3 in
Maximum forward reach	3.80 m	12 ft 5 in
Lifting speed	7 seconds	7 seconds
Lowering speed	7 seconds	7 seconds
Boom extension speed	8 seconds	8 seconds
Boom retraction speed	6 seconds	6 seconds
Inside/outside turning radius	2.20/4.05 m	7 ft 3 in/13 ft 3 in
Towing capacity at dynamometer	6,500 kg	14,330 lb
Obstruction angle	90°	90°
Departure angle	52°	52°
Engine type	Deutz turbo diesel 60 kW (81.5 hp)	
Maximum travel speed	24 km/h	15 mph
Gradability (Unloaded)	40%	40%
(Full Load)	25%	25%
Tank capacities		
Fuel	92 Lt	20.2 gal.
Engine oil	8 Lt	1.76 gal.
Coolant	15 Lt	3.3 gal.
Hydraulic oil	90 Lt	19.8 gal.
Forks: Floating forks	length 1200 mm	3ft 9 in
Section	130 x 50 mm	5.1 in x 2 in
Fork holder plate rotation	135°	135°
Tyres	400/70-20	
Weight	6,000 kg	13,228 lb



A division of FORCE CORP  
FREECALL: 1800 674 777