

GTH™-4017

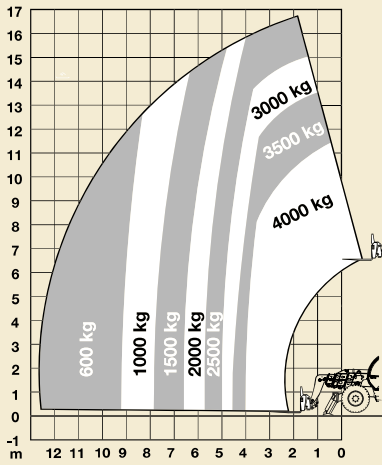
**Rough Terrain
Telescopic Boom
Material Handler**

For all your rough
terrain material
handling needs



Genie Australia
GENIE MEANS MORE THAN LIFTING

Lift Capacity Chart



Standard Features

- 4,000 kg (8,818lbs) max. lift capacity
- 16.7 m (54 ft 7 in) max. lifting height
- 12.7m (41 ft 6in) max. forward reach
- 360° visibility over the lowered boom
- Four-wheel drive
- Three steering modes: front wheel steer, crab steer and coordinated steer
- Oscillating rear axle with axle lock out
- Front Hydraulic outriggers
- Chassis levelling on front axle (+ or -8°)
- Limited slip differential
- Closed loop hydrostatic drive for smooth and precise positioning
- Multi function – proportional joystick
- Brakes: multi-disc, oil immersed, self-adjusting
- Powered assisted steering
- Easy access to components for maintenance
- Floating forks
- Attachment holder plate with mechanical coupling
- Adjustable steering wheel
- Fully adjustable seat
- Quick coupling of tools from cab
- Lockable fuel tank

Options and Accessories

- Air conditioning
- Forks side-shift Class 3 + /-100mm (3000kg max)
- Loading shovel 800 litres
- 4 in 1 bucket 900 litres
- Spare wheel
- Jib 4 m/900 kg
- Fixed hook on plate (Max 3000 kg)
- Adjustable spotlights

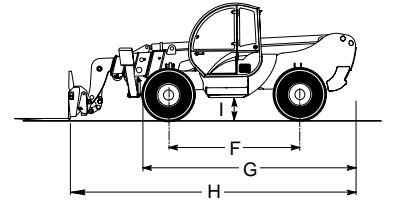
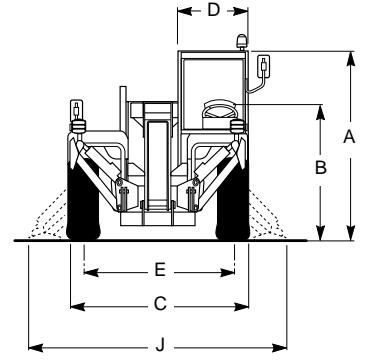
Safety System

- Longitudinal stability control system with: visual display with coloured LEDs, audible alarm, automatic lockout of boom extension and lowering.
- Lockout of stabilizers and chassis levelling with boom raised.
- Protection against accidental manoeuvres.

Standard Compliance

- Operating cab conforms to EEC directives 86/295 (ROPS) and 86/296 (FOPS).

(A)	Height: 2.565 m
(B)	Height at steering wheel: 1.980 m
(C)	Width: 2.385 m
(D)	Inside cab width: .910 m
(E)	Track: 1.980 m
(F)	Wheelbase: 2.850 m
(G)	Length at front wheels: 4.520 m
(H)	Length at fork-holder plate: 6.315 m
(I)	Ground clearance: 0.460 m
(J)	Overall width stabilisers extended: 2.93 m



Specifications

	Metric	Imperial
Lift capacity (max.)	4,000 kg	8,818 lbs
Lift capacity at max. height	2,500 kg	5,511 lbs
Lift capacity at max. reach	600 kg	13,221 lbs
Fork holder plate rotation	145°	145°
Lifting speed	27 sec	27 sec
Lowering speed	30 sec	30 sec
Boom extension Speed	25 sec	25 sec
Boom retraction Speed	25 sec	25 sec
Inside turning radius	1.30m	4 ft 6 in
Outside turning radius	3.99m	13 ft 1 in
Break out force with 8001 shovel SAE J732/80	7,400 kg	16,314 lbs
Towing capacity at dynamometer	7400 kg	16,314 lbs
Obstruction angle	39°	39°
Departure angle	27°	27°
Engine Type	Perkins turbo Diesel, direct injection, low emissions. Water cooled, 4 cylinders Power 74.4kw (101 Hp)	
Travel speed (max.)	35 km/h	22mph
Gradeability (Unloaded)	40%	40%
(Full load)	25%	25%
Tank capacities		
Fuel	135 Lt	29.7 gal
Engine oil	11.5 Lt	2.5 gal
Coolant	15 Lt	3.3 gal
Hydraulic oil	150 Lt	33 gal
Fork type - floating forks	Length 1200mm	4 ft 2 in x 2 in
Section	130x50 mm	
Tyres Type	405/70-24	
	8-hole rim (DIN 70361)	
Weight	12,680 kg	27,954 lbs



A division of FORCE CORP
FREECALL: 1800 674 777